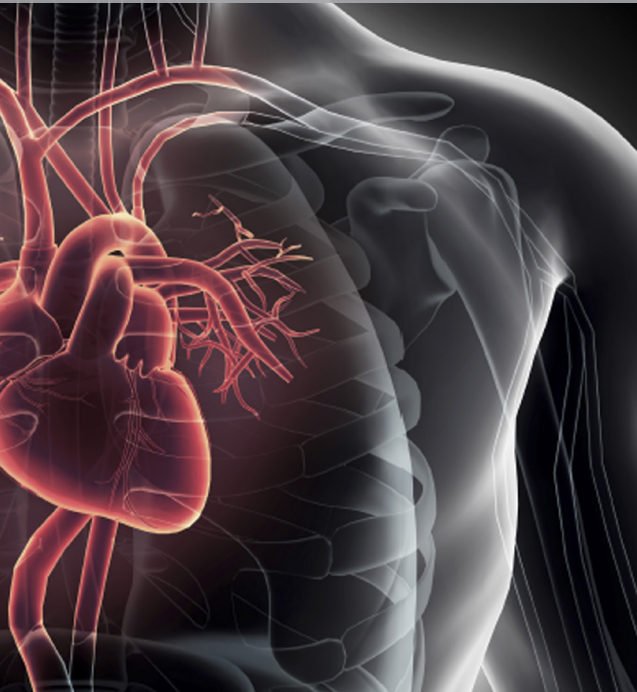


**SAVE THE DATE**

# *2nd Annual 2018 Cardiovascular Course for Trainees and Early Career Physicians:*



## **Current Concepts in the Diagnosis and Management of Coronary Artery Disease**

**Friday, April 20, 2018**

The Grand Event Center at Grandview Yard  
820 Goodale Blvd. Grandview Heights, OH 43212

The course will focus on current concepts in the diagnosis and management of patients with coronary artery disease (CAD). Preventive measures for CAD and how to approach each phenotype of the disease will be discussed. Special issues and special patient populations related to CAD will be presented based on cutting edge information. Further, hands-on cardiac dissection will be performed where cardiac and coronary artery anatomy will be related to cardiac imaging.

**Sponsored by** The Ohio State University Wexner Medical Center, in cooperation with The Ohio State University Heart and Vascular Center and the Division of Cardiovascular Medicine

**For additional information and registration please contact:** Ellen.Yokoyama@osumc.edu

**Accreditation:** The Ohio State University Medical Center, Center for Continuing Medical Education is accredited by the Accreditation Council for Continuing Medical Education (ACCME) to provide continuing medical education for physicians.

The Ohio State University Medical Center designates this educational activity for a maximum of **6.5** AMA PRA Category 1 Credit<sup>™</sup>. Physicians should only claim credit commensurate with the extent of their participation in the activity.



**THE OHIO STATE UNIVERSITY**

WEXNER MEDICAL CENTER

### **Visiting Professor**



Kim Allen Williams, MD, MACC, MASNC, FAHA, FESC  
James B. Herrick Professor  
Chief, Division of Cardiology  
Rush University Medical Center  
Chicago, IL

### **Co-Directors:**



Konstantinos Dean Boudoulas, MD, FACC, FSCAI  
Associate Professor of Medicine  
Division of Cardiovascular Medicine  
Section Head, Interventional Cardiology  
Director, Cardiac Catheterization Laboratory



Raymond Magorien, MD, FACC  
Associate Professor of Medicine  
Division of Cardiovascular Medicine  
Director, Level 1 Cardiac and Vascular Emergency Program